

MACHINING DEVIATIONS FOR LINEAR DIMENSIONS	RANGE	0 - 6	6 - 30	30 - 120	120 - 315	315-1000	1000-2000	2000-4000	ABOVE 4000	RA
	TOLERANCE	±0.1	±0.2	±0.3	±0.5	±0.8	±1.2	±2	±3	~
FOR DIMENSIONAL TOLERANCES OF SHEET METAL PARTS AND WELDED STRUCTURES, REFER STD. RD-227										
UNSPECIFIED TOLERANCE FOR LINEAR AND ANGULAR DIMENSIONS REF. IS 2102 (PT-1) (MEDIUM)							QUALITY OF WELD JOINTS REF. RD 230 MEDIUM			
VALUES OF SURFACE TEXTURE SHALL BE AS PER COMPANY STD DS. 1012.C.							STATUS:	PROTO		
WELDING SHALL BE CARRIED OUT AS PER IS: 9595-96										

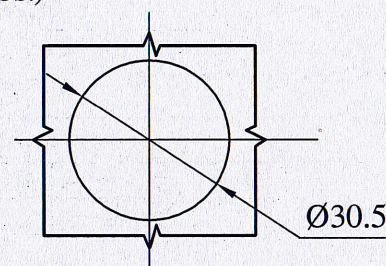
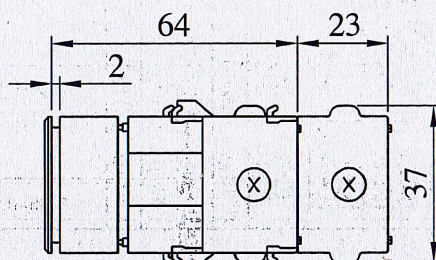
PUSH BUTTON - GREEN Ø35

TECHNICAL REQUIREMENTS:

1. TYPE : PUSH BUTTON ACTUATOR FOR FLUSH MOUNTING WITH MOMENTARY ACTION.
2. RATED OPERATING VOLTAGE : 110 V DC
3. LENS : PLASTIC GREEN
4. TYPE OF SWITCHING ELEMENT : 1NO + 1NC WITH SCREW TERMINALS (SCH) (QTY. 2 NOS.)
5. SWITCHING SYSTEM : SNAP ACTION SWITCHING ELEMENT WITH CONTACT

RATING OF 2.5 A AT 110V DC.

6. CONFORMING TO STANDARD : IEC : 60947-5-1 / IS 13947-5-1
7. DEGREE OF PROTECTION: IP65
8. MAKE & TYPE :
- M/S EAO : PART NO. - 704.012.518 (QTY. 1NO) + 704.900.5 (QTY. 2NOS.)
 - OR EQUIVALENT M/s MAFELEC MAKE



MOUNTING HOLE DIMENSION ON PANEL

[illegible]